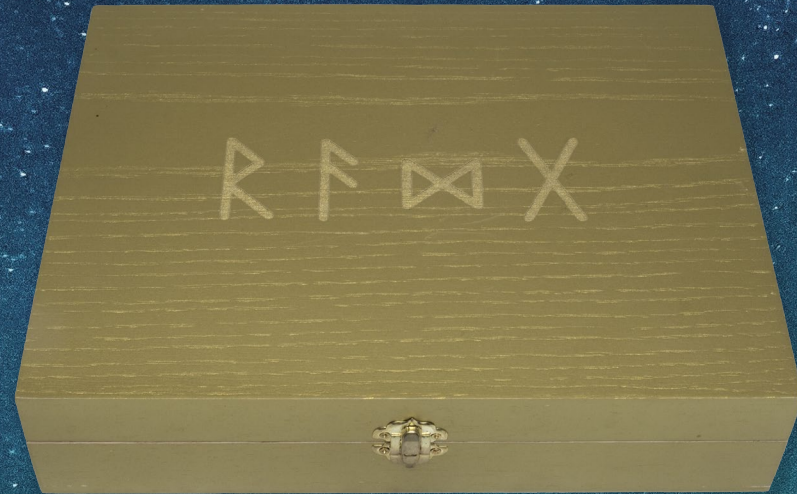


THE GOLDEN BOX



~ A NEW SYSTEM OF MEDICINE ~
12 Remedies from the Immortality Range

Contents



The Golden Box.....	4
Liberation.....	6
Blue Lotus.....	7
Redemption.....	8
Immortality.....	9
Immortality Vajra.....	10
Immortality Garuda.....	11
Immortality Lakshmi.....	12
Immortality Kali.....	13
Immortality Shiva.....	14
Immortality Vishnu.....	15
Immortality Asgard.....	16
Immortality Gaia.....	18
Immortal Eyes.....	20
Immortal Eyes 20/20.....	21
The Immortalities.....	22
Creation.....	24
Tranquility.....	26
Panacea.....	28
Golden Spiral.....	29
Miracle Balm.....	30
Frequently Asked Questions.....	32

The Golden Box

The Golden Box contains 12 remedies (specifically chosen to suit individual needs) of the 18 available remedies. It also includes a Miracle Balm with the remedy made from the Immortal Jellyfish used for stings, bruises, cuts and inflammation, or anywhere the tissue has been damaged.

The remedies are listed partly in the order they were created and partly grouped into sections as the Immortalities for example, form a whole journey and story in themselves. The remedies in the Golden Box offer specific solutions to deal with any situation from crying children and scraped knees to old karmic patterning which still conditions our behaviour. The Immortality range allows us to perpetually cycle back to youth while engaging a range of archetypal forces, allowing us to address different aspects of the self.



The box was made to herald the completion of a new system of medicine, a system which is largely beyond medicine as it deals with a lot of the deep issues which give rise to varying forms of illnesses.

The Golden Box is a massive journey in itself a journey back through our own personal space and time to dig out the confusion and damage which conditions us into many disease processes.

By engaging this process of self-revelation with the Golden Box, we can realign ourselves with our original blueprint which allows us to express what we came here to express in the first place.

There is no shame in getting lost along the way as none of us received good guidance on dealing with the mind in the first place so we were bound to get lost. What the Golden Box represents is a way out of the confusion and the suffering and into the great mystery of life and the reason for being.

The Golden Box works systemically through memory, patterning, ageing, disease and the self to allow us to take up our positions as sovereign creators in this world.

All these remedies are moving us to a state of total self-determination and freedom, away from the unconscious forces that often bind us.

DOSAGE

One dose is 7 drops though some people take fewer, especially of the Immortality range if they find them too strong. All remedies are taken directly under the tongue, except for the eye drops. One drop is required per eye and this goes directly into the eye. The balm is applied topically to the skin.



Liberation

Finishing off the past to allow us to move forward

Liberation is designed to finish our unfinished memories by helping them towards resolution either in dreams or in real life. It does this by utilizing the power of the nine gems and the five fires which are ancient alchemical technology remedies designed specifically to get to the places in the body where this trapped memory is stored.

It works systemically to bring completion and resolution to events and often begins with unfinished relationships, then onto friendships, then family interactions and then acquaintances.

It does this by presenting us with situations or dreams where we can get closure or find a new way of interacting with these individuals so we are not carrying around unfinished and unresolved memories of the past.

The effect is a huge lightening of the weight we carry around in our cells every day, which translates into a much smoother and seamless interaction with the world. Often in the process of taking Liberation, people or unfinished events from the past will pop up in our reality in a way that we are able to truly see what is required for deep healing, resolution or closure to occur.

For more information about the process, ingredients and testimonials go to:
<https://www.liberationtheremedy.com/the-journey-of-liberation/>

Blue Lotus

Calm and relaxation

Blue Lotus was highly prized by the ancient Egyptians for its almost miraculous calming effect on the nervous system. It is completely safe for children and is in fact an essential part of any child and parents' life as it quickly calms both parties so all benefit immeasurably. This alchemical version of the Blue Lotus is made using the red and white holy springs of Glastonbury which carry immense healing powers in themselves and represent the fusion of the masculine and the feminine.

Blue Lotus can be used in a variety of situations from public speaking to hysterical kids and of course to aid sleep. It positively benefits any situation where soothing of the nervous system is called for. The beauty of the Blue Lotus is that it in no way effects the functioning of the mind except in making it calmer due to its general soothing effect on the nervous system.

Whenever tension and agitation are making a situation unpleasant, Blue Lotus will have a positive and calming influence and return the situation to a harmonious version of itself and you along with it.



REDEMPTION

Redemption

Clarity and reflection

Redemption is made from Noya Rao, also known as the flying tree or the mother of all plants. This is a bio luminescent tree from Peru, said in Shipibo mythology to have been responsible for creating all plant life on earth. It is also said that if you go to her and ask, she will give you knowledge of the plants if she likes you. Noya Rao is also well known for her deep and powerful, yet often unknowable healing gifts.

Redemption is possibly the hardest of the remedies to explain as she operates in very unusual ways but always for your highest good. People have had dreams of initiations, healings and teachings from her but in essence she removes the conceptual structures which are limiting our view and causing us to suffer.

Now the action of Redemption can appear in many ways, but I think we can all agree that it is always useful to connect to an immortal force which is conspiring relentlessly for our own benefit and whose only purpose is our greatest evolution.

Redemption is also designed to deal with the reactive patterning that binds us into habitual action and conditions our existence. It does this in a multitude of ways, but the ultimate outcome is of greater freedom, spontaneity and self-reflection.

Redemption also contains, burnt diamond, gold bhasma, Shatavari, cacao, bee pollen and the Disa orchid essence, all of which help complement and enhance the effect of Noya Rao.



IMMORTALITY

Immortality

Rejuvenation and cellular regeneration

Immortality Is made from the biochemical message of regeneration captured from the Immortal Jellyfish *Turritopsis Dohrnii*. This message has then been amplified and altered slightly so that it works on all living beings.

Immortality is the first in the Immortality series and comprises a single level of amplification of the Immortal Jellyfish. Immortality works to regenerate all cellular structures and the life force itself resulting in younger healthier expressions of organ systems in people. This means better health, better libido, faster hair and nail growth, healthier skin, better digestion, more effective functioning of the kidney and the liver and better blood circulation. Then there is the cumulative effect on health of having improved inter organ system functionality as well as more youthful biochemical structures and better fluid exchange throughout the body.

Many people reported improved circulation, more energy, better detoxification pathways, improved insulin, and thyroid function as well as better tolerance for alcohol which of course implies better liver health. Now the older we are, the longer the journey back to an age we feel comfortable and are able to do whatever we need to do without physical impediment.

The idea behind the Immortality range is that we take each one until the body acclimatizes to the frequency used in the message from the jellyfish. Then we progress to the next version of Immortality.

It is important to be aware that we are actively telling the body to override its core programming which moves towards ageing and death. This means we need to continually give this message to the body to prevent the normal processes of old age, death and diseases from ageing.

IMMORTALITY VAJRA



Immortality Vajra

Healing and removing obstacles

Immortality Vajra is the next in the series and comprises 3 levels of the jellyfish as well as the Dhanvantari mantra. This is the mantra associated with Dhanvantari, the Hindu god of healing. In addition to this the Ganesh mantra has been included which is all about removing obstacles in our path.

Immortality Vajra, of all of them dives deeply into what is obstructing us from the past and can be quite powerful. Vajra for me was very powerful as it flushed out a lot of my teenage anger which I came to realize was a strong driving and binding force in my reality.

Everyone will experience these remedies differently as we all have individual stories with blocks and responses in different areas. What unites us is a shared history of impediments and obstacles to our unveiling awareness and cellular regeneration.

We often use Immortality Vajra when we come to a seemingly insurmountable obstacle that we cannot move over or go around. Often, it is the reframing of the problem which is the solution and this is where Immortality Vajra comes in.

We can go up and down through the Immortalities as each bottle dispenses the rejuvenation message in a different frequency. After taking a new one for a while, the old one becomes new again as the body forgets and we are able to get a fresh biochemical message again. Certain memories which return also seem to be held at different levels of amplification so it is useful to run through them all in the process of returning ourselves to youth.

IMMORTALITY GARUDA



Immortality Garuda

Eagle view and stimulating

Immortality Garuda has five levels of Immortality as well as the Garuda mantra.

Now the Garuda mantra is all about rising above the situation to gain some perspective like the eagle rising up and eyeing out the land. Garuda is the lightning bird in Buddhism, it is responsible for keeping the Nagas in check. The Nagas are the serpent spirits that guard the waterways and keep the treasures hidden in Buddhism and Hinduism.

When we look at this in ourselves it is represented as the force that keeps those aspects of greed and covetousness in check. They say that when we disrespect the Nagas they bring cancer as a response so I believe that Immortality Garuda will be extremely useful in the treatment of cancers.

Immortality Garuda has been affectionately called the Red Bull of the Immortality range as it can be quite stimulating to the system. All the Immortalities regenerate our life force or kidney chi, and it is this life force which is responsible for keeping cancer cells in check in the first place.

As people age, their life force diminishes and hence, they are more prone to unregulated cell division leading to cancers. By returning us back to an earlier and stronger version of ourselves, we are less likely to even get to this point of proliferating unregulated cell growth.



Immortality Lakshmi

Effortless abundance

Immortality Lakshmi has 7 levels of Immortality, the Lakshmi mantra, Creation, Golden Spiral and Blue Lotus. This remedy is really the first of the big band productions of Immortality as it is designed as an installation of abundance as well as a continuation in the Immortality range.

The Creation sets the mood of all victorious confidence, the Golden Spiral brings us back into alignment with ourselves and the Blue Lotus soothes our nervous system to allow the Lakshmi mantra to effortlessly express itself in our bodies.

The idea behind Immortality Lakshmi is that it is there to reset us to the mood of effortless abundance and allow receiving without obstacles to become our natural state. Lakshmi is the Hindu goddess of abundance and by consuming the mantra dedicated to her, we bring ourselves into alignment with this universal current of abundance.

By putting all the different remedies into Lakshmi, we get a very deep and layered experience when we take it which enables us to quite literally become Lakshmi in all her aspects. Poverty and struggle have been so deeply engrained in a lot of the human experience it is redemptive to reinsert a proper relationship with money and abundance.

With Immortality Lakshmi we can re-educate our emotional responses by bathing our cells in abundance which then becomes our nature. This is often where people struggle, as our body's responses cannot be rationalized and therefore are hard to access consciously. By soothing and enhancing the nervous system and our overall sense of wellbeing we are able to effortlessly attract and manifest abundance from an instinctive space, in the same way a cat will automatically know how to hunt a bird.



Immortality Kali

Task fulfilling energy

Immortality Kali has 9 levels of Immortality as well as the Kali Mantra.

Immortality Kali is very useful in getting people out of a state of lethargy as its energy is very stimulating in a practical no-nonsense kind of way, some experience it as joy and exuberance.

Immortality Kali is particularly beneficial for people stuck in old patterns and have little self-motivation to get up and get on with things. I remember taking Immortality Kali before I did my tax return and looking forward to the task at hand with relish, an almost inconceivable scenario.

Anyone with tasks that have been put off for a long time or a 'to do' list that extends down the front steps will really be helped by the energy of Immortality Kali as there is a very practical sense of just chewing through things and then looking for more things to do.

A lot of people who took Kali found they ploughed through their work with a fierce concentration and then looked for new creative projects to engage. It is also very useful post illness when the body is struggling to get strong and engage again as it really destroys the heaviness and lethargy we often feel post illness.

IMMORTALITY Shiva



Immortality Shiva

Cures reactive behaviour by separating thought and emotion

Immortality Shiva is made up of 12 levels of Immortality and 5 Shiva mantras as well as a living liquid form of gold that provides a matrix allowing things to animate.

What Shiva shows us is that everything may be accomplished without difficulty in a slightly wrathful no-nonsense mood but also that everything is ok at the core and that there is actually nothing to worry about.

What is demonstrated clearly is how thought and emotion, which are normally paired up can be separated, and in so doing lose their potential to bind us into habitual reactions. An example of this would be the emotion of anger being separated from the thought of a person e.g. Johnny. Normally we see Johnny, whom we do not like, and we have an emotion of anger and then we are in the state of hating Johnny with all its story lines and the need for us to show up as the enemy of Johnny.

What Shiva does is it separates these two, so we see Johnny and we have an emotion of anger, but they are not paired, so the anger dissipates as a raw sensation without an object, and the thought of Johnny carries no charge, so it goes nowhere and soon disappears as well.

This is huge as it means that we are no longer bound to behave in certain ways based on our emotions. The traditional image of Shiva is of him stepping on the dwarf which represents duality or the experience of self and other. He cannot destroy the dwarf as it is the essence of human interaction, but he can keep it at a level that it never overwhelms him.

This shows us in real time how to be the master of our emotions and not the victim. We cannot, nor should not, suppress the emotions as they are pure in themselves and a part of our essential nature, but we get to choose if we want to engage them and if so for how long.

IMMORTALITY Vishnu



Immortality Vishnu

Easy accomplishment

Immortality Vishnu has 15 levels of Immortality as well as 2 Vishnu mantras, and the Siddhi Dhatri mantra. Siddhi Dhatri is the form of the Goddess that bestows siddhis or powers in traditional Hindu mythology.

The reason I have used mantras to pair with the ascending levels of Immortality is that it offers us archetypal forces which we can then engage. This allows us to engender these archetypal mindsets to bring out these aspects in ourselves. Vishnu is the god of Preservation, the force which maintains the smooth running of the universe.

Vishnu is quite simply many peoples favourite as it has a very strong but gentle sense of relentless and effortless accomplishment. You really feel that you cannot fail and that everything is going your way without a tremendous amount of effort being exerted on your part.

The image I have of Immortality Vishnu is of lying in my bed, drawing my bow with one hand and hitting a bulls eye every time. The feeling that we will win and we cannot fail is deeply reassuring to people and allows them to take back their all-victorious nature and natural ease.

This enables us to get the normal nitty gritty things done without effort and then get on with the real purpose we came here for. Taking Vishnu together with Creation sets in place the mood of a fantastic day every day and who would not want that.

I find it hard to imagine a situation where taking Immortality Vishnu would not benefit the whole process immensely and this is really what one wants at any juncture.

IMMORTALITY ASGARD



IMMORTALITY ASGARD



Immortality Asgard

Unbelievable insight

Immortality Asgard is quite simply something else with 22 levels of Immortality and the Norse Runes. These Runes were cooked up with gold in a universal solvent allowing their living nature to be brought to life.

Asgard also contains Creation and Blue Lotus to smooth out the experience, which can be a bit unusual albeit fascinating in the beginning. Asgard gives us the perspective of being the observer of our own life, which gives us the choice much like Shiva, to react or not to any situation and the possibility to change our responses due to our altered perspective.

We are able to get an altered perspective by watching our emotions and patterns arise but being apart from them. This is astounding as it sheds light on how we normally get caught up in the play of life. Once we step away from the ceaseless arising, we see how a bit of distance makes all the difference. We then can choose which emotional states we want to react to instead of being driven by our habitual responses.

Most of these are old reactive patterns from childhood or patterns handed down to us, copied and modelled from our parents' emotional responses. This altered perspective on ourself and our habitual patterning is through having a different or third person perspective on ourselves. In this way, we give ourselves the gift of change. How easy is it to see what someone else needs to do to end their suffering yet how difficult for us to see this same pattern in ourselves. Once we see the pattern as an outsider, we are astounded and appalled at how we have let this pattern bind us for so long, and are then free to change it.

I woke up one night full of anger. In that moment, I saw myself as my father being angry and was able to see how I had inherited his response to any opposition to his will.

Once I saw this, and then myself as 'anger's bitch' I could no longer entertain anger as a governing force in my reality.

Anger and all the emotions always come with the perfect set of stories, excuses and justifications to be angry, jealous, sad, or grieving. In truth it is all rubbish as it binds us into conditioned behaviour, which is just suffering. Once you have seen anger or your particular flavour of tormentor for what it is - just an arising of emotion, there is no way you are going back to being bound by it.

This is exactly the story of the Buddha when Mara the embodiment of the illusion sensed the Buddha was going to break free from the illusion. He sent his daughters to lure him with desire. When this failed, he sent his armies to terrify him. The Buddha sat firm and watched it all, showing no response, either desire or aversion. Eventually the forces of Mara, the illusion was banished and Mara slunk off with his tail between his legs.

This is what Asgard does. It allows us to see the illusion for what it is and its binding effect on us and then all we do is step away so we are not injured by our own desire and aversion. Of course, we do not have to stop feeling things, we put them down when they are done, and choose to either pick them up again or not without being burned or conditioned by them.

Immortality Asgard also shows us how these runes exist in our bodies and in every other structure in existence. It is, at its essence, the core living transactional set of forms underpinning reality. By recognizing this in ourselves it is easier to see it elsewhere which allows us to engage a new interconnected neural network with all living and unliving things. In a nutshell, the runes in us reach out to the runes in everything else and share information like a giant internet or mycelial network with limitless and unending connectivity, bandwidth and access.



IMMORTALITY GAI

IMMORTALITY GAI

Artwork by Autumn Skye

Immortality Gaia

Total sensory integration, true embodiment on the earth

Immortality Gaia represents the culmination of all the remedies that have come before. It is simultaneously the most potent and most gentle as it contains aspects of all matter on the planet.

I have tried to put Gaia, or the sense of Gaia into it using a range of ingredients to cover the feeling of immense, all-encompassing power, coupled with the feel of being totally held and loved by that power and then on to the next step of actually being an integral part of it.

Immortality Gaia is an initiation back into yourself, a returning home to full incarnation in a new form as a part of our birthright and as an essential part of our further evolution. This includes the flowering of a lot of our hidden gifts which have lain dormant till now until the golden rain of Gaia wakes up our pure potential and lets us inhabit our perfected body. What I felt initially from Gaia was absolute calm, a very normal feeling but with more depth than I had ever experienced; my eyes opened wider, my shoulders were straighter, and I saw things I had never seen before.

Immortality Gaia continues to teach and deepen and allows us to move forward into the world with everything we were born to have. I believe this remedy is something we can continue to take and something which will not only promote our longevity and health but will make sense of our incarnation on this planet.

Immortality Gaia contains 30 levels of Immortality, it contains all the elements represented on earth with Himalayan salt, Kalahari salt, Calzyme which is a fossilized remnant of a prehistoric seabed, and Shilajit. These contain all the elements so we can use them to rebuild our bodies into a more indestructible version of ourself.

I have cooked all these ingredients together in a universal solvent. This solvent has the power to bring things to life or to release their energy so it may be communicated to us as a teaching. For strength and super health, I have included Moringa and Buchu, both known to be associated with supreme health and longevity.

Then there is the Hibiscus flower which represents the fusion of masculine and feminine as well as giving us access to prophetic dreams. I have included the Bay leaf, known to aid in manifestation, prosperity, protection, cleansing and perhaps most importantly, psychic development.

I also included water from a holy spring on top of Table Mountain and stones and moss from a holy lake, to represent water and earth. I burnt some tree branches and lichen and added their ashes to represent the fire element. I included a visualization of a hawk claw to represent the element of air.

Then it has the Guru Rinpoche mantra chanted into the mix to purify all passions and poisons and to bind all the ingredients together as well as Reishi to allow all the ingredients in the formula to work harmoniously. This has all been cooked together for many hours in a pot with 24 carat gold leaf to bring it to its fullest expression and to allow the nature of all these substances to extract into a cosmic soup. This expression of Gaia has then been further amplified to deepen its effects.

The ultimate idea behind Immortality Gaia is that it sets up an internal and organic dialogue between us and the planet as we draw and feed ingredients into ourself which allows us to rebloom in just the way we always wanted. Many of us have felt separated from the earth, from ourselves and others and this brings us back to a beautiful earthy unity in a way that makes us truly feel at home in our body and in all other aspects of relating.



IMMORTAL EYES

Immortal Eyes

Immortal Eyes is the Immortal Jellyfish made up in distilled water to be used directly in the eyes.

Dose is 1 drop per eye in the evening to let the eye regenerate at night.

Immortal Eyes has been extremely useful in cases of dry eyes and floaters, and in some cases in improving short and long-distance vision. It strengthens the tissues of the eye and ensures we have the healthiest and most youthful eyes possible for the age at which we start taking it. All Immortalities improve circulation in the body and by applying it topically to the eye itself we ensure improved circulation to the eye.

It also acts directly to keep the tear ducts in optimal shape so we have well lubricated healthy eyes. Immortal Eyes will not really be helpful in cases of astigmatism or situations where there is permanent damage to the eye itself as this is a structural change. What Immortal Eyes will help with is functional problems as it will improve the functionality of the eye ensuring we have the healthiest happiest eye possible for our age.

As we age, the muscles in the eye weaken. By using Immortal Eyes regularly, we ensure that the muscles are in the best shape possible by increasing blood flow to the area so problems of failing optical accommodation due to ageing, cease arising.

Since we are only using a single drop in each eye every night the bottle of Immortal Eyes will last for three months. Always ensure that the dropper does not touch the eye as we are putting the dropper back in distilled water and any bacteria on the eye could contaminate the bottle. The eye does a lot of unpaid work for us, so it is good to spoil it a bit every now and then.



IMMORTAL EYES 20/20

Immortal Eyes 20/20

Immortal Eyes 20/20 is three levels of immortality in distilled water as well as the amplified version of the Peruvian plant Sananga used to combat the emotional and mental causes of poor vision. These include grief, existential exhaustion and loss of a love for life through hardship.

When we take Immortal Eyes 20/20 we are ensuring we get not only the best topical application of the regenerative effect of the Immortal Jellyfish but also assistance with other emotional factors which might be causing vision to be impaired.

Using either of these products has helped people do away with reading glasses, vastly improved dry eyes and even in some cases re-established proper functioning of the tear duct. It has been miraculous for floaters where the vitreous humour of the eye gets more sticky with age. By taking Immortal Eyes the vitreous humour returns to a more fluid and liquid state resulting in the disappearance of floaters even in those over 80.

Either of the versions of Immortal Eyes help return the eyes to an earlier version of themselves where they were stronger and healthier and keeps eyes functioning at their optimal cellular capacity.

By including the emotional causes of failing vision and poor eye functionality we are addressing some of the unaddressed causes that often underly poor vision which means that we have a much deeper acting substance with which to improve our vision.

The Immortalities as a Group

The Immortalities are sequential for ease of understanding only, the truth is that we shift the goalpost to offer a different and new cellular experience each time. We do this so the body does not become acclimatized to the message and cease responding. The addition of mantras also helps to ensure that the body receives a new message and keeps returning us to youth. It also allows us to engage with a range of universal archetypes on a cellular level.

All the Immortalities of course speed up regeneration and healing as well as the process of cellular repair by returning us to an earlier younger version of ourselves. There will be some increase in appetite and thirst and need for rest at various points as the body reaches out to gather the building blocks for new cells and requests downtime to repair structures.

In all the Immortalities there is a degree of memory recall, as we flush out old cells and revisit their contents. This can appear as memories, thoughts, feelings of the past as well as past people coming back into our lives to finish their journey with us. This effect is often seen in dreams but is also seen in daily life and even simple things like songs or smells can trigger deep buried memories.

Most of these are not good or bad they are just memories and all we really need to do is to watch them arise and disappear. In many ways it is very similar to the experience of watching scenery out the window as we are driving through the country except it is our historical scenery from our personal memory.

The levels of Immortality are levels of incremental amplification, so 22 is not 22 times stronger than one. They are continuous layers up a scale like notes on a piano and so are experientially different, although higher amplitudes tend to be deeper and longer acting. If we see these levels like floors of a house, the higher ones are not better ones they are just different and further from the ground. The experiential result of this is that we have different experiences, memories and sensation for example, the view might be better the higher we go.

It is often useful to go through the levels of the house to clear out memory at those levels as then we have a smooth ride up the elevator to higher elevations. Most importantly though they are different from each other so the body does not see them as the same thing, and so it continues to allow the regeneration effect to occur.



The inclusion of different ingredients and mantras ensure we are ingesting different offerings from each different Immortality variation which keeps the body's response fresh. I personally had a lot of memory arise from the first, the third, the 15th, and then the 22nd and I am not entirely sure why this is the case.

Energy spikes were noticed, on the first, the fifth, the 15th and the 22nd, also not sure why this is the case but useful to know if you need a bit more of a tiger in your tank.

Different people will have different effects from the different bottles and so anything I say might arise differently for you, but I have seen noticeable trends in the journey which I have endeavored to communicate.

Our memories are totally personal so you cannot begin to say what memory will pop up when, or how the appetite or one's personal energy will fluctuate in this process.

We are still gathering information on the action of all 9 Immortalities, but it has been almost 2 and a half years now and we know a lot more than we used to. We have also collected 61 pages of testimonials on the effects of the different Immortalities so have a pretty good idea of what will happen when we take them.

For more information on the psychological and philosophical implications of living forever go to www.new-immortals.com



CREATION

CREATION

Creation

Best day ever

Creation has been designed around the concept of best day ever and has been reverse engineered around what this might feel like. It has components which allow us to experience openness, expansiveness, receptivity, playfulness, creativity and the sense that anything is possible.

Creation can be used in conjunction with any of the other remedies when we need to be at our best or don't want to chance a bad mood spoiling our day.

Creation contains Royal Jelly, the Light of Jupiter, Reishi, the Seeds of a Thousand Wildflowers, Pine Pollen, Protea Nectar, the Disa Orchid as well as the Dhanvantari mantra.

When we take Creation in the morning, we are pretty much assured of a good day as we meet the world with openness and enthusiasm.

Royal Jelly gives us the sense of our own regality and the feeling that we are in control of our destiny. The Light of Jupiter gives us the sense of celebration and expansiveness, the feeling of 'Yes! Let's have some more, why not.' Pine Pollen gives us the strength of the pine tree to rise above all problems and to push resolutely upwards regardless of the situation.

The Seeds of a Thousand Wildflowers contain the essence of absolute creation itself, the potential for new opportunities, possibilities and life itself to spring forth at any moment. Protea Nectar freshly collected and made into an essence on the spot gives us its living essence and a sense of the sweetness, purity and playfulness of life at every moment. Disa Orchid flower essence gives us the feeling of being held completely in an embrace while still having the ability to move out into the world without any feeling of threat. Dhanvantari

Mantra, the mantra associated with the Hindu god of healing is to remove fear and heal disease. Reishi Mushroom helps bring what is too high down and what is too low up. As a result of this it acts to harmonize and regulate the ingredients in the formula.

The main idea behind Creation is to create a good mood as an installation so we can learn to mimic its effects by being in it every day. By taking Creation we are in fact retraining the body, the mind and the emotions in the mood of feeling great without conditions.

As we keep taking it, we literally relearn that things can go our way every day. There is a certain viewpoint in us which believes that if you have a good day you need to have a bad one to compensate or somehow you are not worthy of another good day in a row. What we learn from Creation is that even if there are fluxes in moods we can ride these fluxes by maintaining a mood of exuberance and in so doing we keep our smile no matter what.

This state obviously has to be relearned by our cells and set in place as our status quo which is in truth our natural state, a state where we win at our own life. How long this takes is hard to anticipate but I find that sometimes I no longer need Creation as I am literally already there since my body has come to know this state as my normal state.

After a while the body might forget this a bit if we have some hardships and this is the perfect time to take Creation again. Creation paired with Vishnu is one of the most sublime and empowering combinations in the world, and is highly recommended for anyone suffering from not feeling absolutely fantastic every day.



Tranquility



Tranquility

Tranquility

Instant calm

Tranquility is a synthesis of the following ingredients and is useful in any situation where greater systemic calm and relaxation is required. Tranquility is designed to help us adapt to stress, to support a calm disposition, open our hearts and allow us to sink into a gentle and healing state more closely aligned to the feeling of love.

As we come home into our bodies we are able to be more deeply present, to rest and relax as the nervous system unwinds and drops into parasympathetic, the state required for true healing.

Tranquility can be used at any time to augment reality by allowing us to run more smoothly. It is suited to use in the workplace, during exams, performance stresses as well as an aid to help with deep restful sleep or just when we are too wound up and need to calm down a bit.

INGREDIENTS:

THE BLUE LOTUS brings us the essence of calm and relaxation and generally takes the volume down on the extremes of reality, it is like having silk poured on our nervous system, and shifts us into a parasympathetic state – the state of healing

ASHWAGANDA is a sedating adaptogen which helps us adapt more efficiently to stress and allows us to perform more effectively with less strain on the system. Adaptogens support the body in whichever unique way it may require which in this case is generating a calming effect on the body. Taking adaptogens is like regular servicing on a car, they ensure better overall functionality by removing systemic resistance.

THE LIGHT OF VENUS is light from Venus funnelled through a telescope and captured in water. The light of Venus nourishes the heart and allows the essence of love to flow in and out of us. When we are in love the brain is flooded with powerful neuro-chemicals and we feel fine with all that is. When we operate from this state it is the exact opposite of stress which allows us to embody a new and healthy reality.

EMERALD is a stone of the heart and helps us relate to the world in a more trusting and openhearted way. It is given as a necklace in certain cultures to ensure marital fidelity as it nourishes the heart and promotes internal satisfaction.

PROTEA NECTAR is collected fresh and made into an essence on the spot gives us its living essence of the sweetness, purity and playfulness of life in every moment.

ORCHID FLOWER essence gives us the feeling of being held completely in an embrace while still having the ability to move out into the world as we wish.

THE DHANVANTARI MANTRA is the captured mantra in distilled water of the Hindu God of Medicine reputedly he who gave us the Ayurvedic teachings on Medicine. The chanting of this mantra or the consuming of the chanted mantra in water is said to cause all diseases to subside and to completely remove fear.

PANACEA



Panacea

Unconditional healing

Panacea has been created to provide assistance in curing diseases in the body by addressing its root causes.

The main ingredient in Panacea is Marosa the hospital plant. It is used traditionally in Peru where they would wash their feet for 20 minutes and then pour this water onto Marosa, the hospital plant.

Then they would wait 10 minutes for the hospital plant to taste their state and reverse engineer a personal prescription. After this they would pluck 3 leaves from the plant to make into a tea and drink this as their individual prescription.

I have been able to recreate this effect from the hospital plant without a lot of the ritual and foot washing and most importantly without needing the actual plant to pour the water on to. The plant still tastes us when we ingest it and then begins the process of manufacturing a unique and personal remedy for us.

Marosa is also traditionally used to heal a broken heart, rebuild self-esteem and initiate a sacred journey of returning to self-love and I believe we can all benefit in some way from this. In addition to this, Panacea contains Bobinsana which works to heal the heart as well as Sananga which is used to heal the vision. When we combine all these forces and add the Flower of Life which is an expression of creation at its most absolute level, we get a remedy which covers many of the underlying causes of disease.

Sometimes disease is a physical thing, sometimes an emotional impediment, sometimes an idea and sometimes a set of emotional responses but regardless of the cause, Panacea is there to provide a curated personal solution engineered just for you.



Golden Spiral

Perfect alignment

Golden Spiral is made from light passed through a sculpture of the golden ratio and then captured in water. The golden ratio, or golden mean is the pi ratio and is seen in everything from galaxies to flowers and seashells and even in the formation of the baby in the womb.

When a person's face is closer to the golden mean as a ratio people objectively find it more beautiful to behold as this ratio is the closest expression of perfection we can find.

The Golden Spiral is this captured ratio which has been amplified to deliver a deeper and stronger effect and what has been found, is that people who take this, return to a state of greater alignment within themselves.

Everyone knows those days when we feel out of alignment with ourselves, as if we stepped back into our body but we do not quite fit back in properly.

Taking Golden Spiral helps us return to this state of original perfection and alignment where everything just works correctly and just flows.

When we are expressing this state there is no haste, there is just effortless perfection manifesting itself. Nature never rushes or comes at things out of alignment and by taking Golden Spiral we allow ourselves to return to this state of effortless elegance where things just work.

Golden Spiral is completely safe for kids and even animals, and can be given at any time when we feel out of alignment with ourselves.

IMMORTAL skin

Miracle Balm

The Miracle balm is balm made from propolis, honey and almond, but its primary active ingredient is the Immortal Jellyfish. The balm has been effectively used for cuts, wounds, infections, rapid healing, haemorrhoids, chapped feet and lips, stings, and even bruises as it speeds up the healing in any area to which it is applied.

Miracle balm is designed to be a topical application of the Immortal Jellyfish completely safe for children which allows us to accelerate the body's normal healing processes and soothe and regenerate areas which have been damaged by trauma.

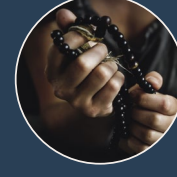
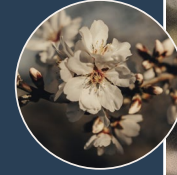
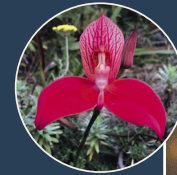
Miracle balm can be applied as often as is necessary to ensure that wounds, bruises and arthritic aches and pains can be quickly and effectively treated to ensure rapid recovery. Since the Immortal Jellyfish increases blood flow and stimulates the release of stem cells which we can then target locally it allows us to have an action on very specific areas on the body to get a stronger effect in that area which is exactly what we are after in cases of trauma.

The Miracle balm can also be used on pets especially on wounds as the combination of the propolis and the Immortal Jellyfish ensures that the wound is kept free from infection while the increased cellular regeneration takes place.



Pashmina

RITUAL ELIXIR



IMMORTAL skin

~ 21 INGREDIENT BEAUTY TRANSMISSION ~
3 FLOWER ESSENCES + 8 BOTANICALS +
5 SUPERFOODS + MANTRA +
IMMORTALITY + CREATION +
GOLDEN SPIRAL

WWW.IMMORTALSKIN.CO.ZA
HAPPY@IMMORTALSKIN.CO.ZA
@IMMORTAL.SKINCARE REJUVENATION

FAQs

WHICH ONES ARE SAFE FOR CHILDREN TO TAKE?

Blue Lotus, Creation, Tranquility, Golden Spiral, Panacea and Miracle balm. The Immortality range is not necessary for children as they are still growing and it is not necessary to make them any younger.

WHICH REMEDIES GO WELL TOGETHER, AND WHICH SHOULD BE TAKEN APART?

Blue Lotus, Creation, Golden Spiral, Panacea, Redemption and Liberation can all be taken in conjunction with each other as required. The Immortality range can be taken with anything but it is good not to take two versions of Immortality on the same day as this is often too stimulating a message for the body.

WHICH REMEDIES ARE SAFE FOR PETS?

All the remedies are safe for pets, a few drops in water works wonders and Liberation in particular has been amazing for pets who have been rescued and carry residual trauma in the body resulting in behavioral disorders. The Immortality range is also very useful for senior pets to help them regain youthful vigour and improved joint flexibility and wound healing.

WHEN TO TAKE THE REMEDIES?

The main thing is not to take the Immortality range at night as they can be quite stimulating and are best taken in the morning.

Blue Lotus and Tranquility are great at night or 'before or after' something that might generate anxiety. Creation is also best taken in the day as it is quite expanded. Some people prefer Liberation in the morning, and some prefer it at night. Immortal Eyes and Immortal Eyes 20/20 are best taken at night to allow the eye to repair while we sleep without having to accommodate to the sun while this is taking place.

HOW DO WE TAKE THE REMEDIES AND HOW MUCH?

A dose is 5 to 7 drops depending on sensitivity and is taken directly under the tongue. The only exception to this is the eye drops where we take a single drop directly in each eye. The balm we use topically on the skin where required.

FAQs

DO WE NEED TO TAKE A PARTICULAR REMEDY TILL WE FINISH IT, OR CAN WE MIX AND MATCH?

We can mix and match there is no sense of a course of antibiotics which needs to be finished. With Liberation or the different Immortalities, we might feel like going on an immersion experience as the actual experience can be a bit like watching a series with different continuing episodes airing on sequential nights.

Of course, the series is all about you, so this makes it even more fascinating. We might also dose repeatedly to get to the core of a remedy and really understand what it is bringing to us, but this is of course a matter of personal choice.

We can for example take a dose of Vishnu one day and a dose of Kali the next if we feel like it as the remedies are designed to meet you where you are at and aid us throughout the day regardless of what we might be experiencing.

WHAT HAPPENS IF I TAKE TOO MANY OF THE REMEDIES AT ONCE?

The best thing you can do in this situation is to just wait for them all to wear off as the potential interactions are hard to anticipate. How long this takes depends on what you have taken but generally no more than 12 hours.

Taking extra doses of Tranquility, Golden Spiral and Blue Lotus are always useful to calm down the nervous system to facilitate this process. More remedies at once are not better as if we give the body too many directives it can get confused, kind of like mixing too many colours we end up with brown.

CAN I OVERDOSE ON THESE REMEDIES?

No, definitely not although if we take a lot of the stronger ones at once we might feel quite uncomfortable for a while until they wear off. Asgard should never be taken more than once a day as it has a long and powerful action which often goes over three days.

WHAT HAPPENS WHEN I FINISH A BOTTLE, CAN I GET A REFILL?

Certain bottles will get more use so will finish faster and these can be bought individually as required. We do not refill bottles due to the potential for energetic contamination.

FAQs

WHERE DO I KEEP MY GOLDEN BOX?

The only thing that damages the remedies is direct sunlight, apart from that, they are impervious to heat and cold and if kept tightly closed they will happily last for many years. The box itself will protect the remedies from direct sunlight if closed which is what we advise if it is on a shelf or table that gets direct sunlight.

WHAT IF I AM QUITE SENSITIVE TO THINGS?

Sensitives typically take a smaller dose, between 3 and 5 drops depending on sensitivity and the remedy.

WHAT ARE THE REMEDIES PRESERVED IN?

All the remedies are preserved in various tasty liquors as this is the easiest way to guarantee non contamination and ensure an extended shelf life. If alcohol is a problem a few drops can be put in boiling water, so the alcohol evaporates off.

WILL THE REMEDIES WORK IF I AM ON OTHER MEDICATIONS?

This is a very complicated question as there are many medications to consider but most of remedies will continue to work even if the person is on other medications. Some caution should be advised if people are on psychiatric medications as they might work in the opposite direction to some of the remedies, although the Immortalities will work on everyone in all situations.

From time-to-time people found they needed less of their chronic medication while on the immortalities as the organ systems worked better so were able to process things faster and therefore required less assistance. This was seen in particular with thyroid medication, insulin and blood pressure medications.

WILL THESE REMEDIES BRING ABOUT PSYCHOLOGICAL CHANGES?

The remedies are all designed for different purposes but a lot of them have strong psychological components as they are dealing with issues related to memory and habitual patterns. When taking them we might experience changes through revealing dreams where emotional patterns or trauma are resolved in the subconscious. We might also experience insights into ourselves, situations, or other people's actions which lead us to a deeper understanding of the play of the mind and empower us through understanding.

FAQs

Remedies like Liberation, Redemption, Panacea, and the Immortalities are working at the level where consciousness arises, and memory gets stuck in the body. They are all designed to unstick various aspects of our understanding and tangled patterning so that things run more smoothly and effortlessly in our daily lives

This process can take many shapes and forms from dream resolution to daily revelation, and it is hard to anticipate where exactly the remedy will act except to say that it will be totally personal as it is working with your psyche towards greater resolution.

These remedies especially the ones listed above have all been meticulously crafted to facilitate positive emotional growth through a clearing of old emotional pain and baggage. Great care has gone into ensuring that this process is as gentle, revealing and liberating as possible so that the process of cure is a process filled with hope and joy even in the midst of painful old memories.

WHAT HAPPENS IF I FEEL THAT THE PROCESS IS GOING TOO QUICKLY AND TOO MUCH IS COMING UP?

The remedies are designed to work hand-in-hand and if you feel the process is running too quickly you can always slow down the dosing to once every second day or even once every third day, or use one of the other remedies to clear blockages or take time out to nourish the nervous system.

The easiest way to slow down a process is to take the remedies less frequently. Anything is manageable if we do it slowly, and it is the intention behind the Golden Box to provide a resource which is curative, deep acting, restorative and supportive.

How much we are able to deal with at any one time is also dependent on the amount of stress we have in our reality and the number of commitments we have at any given moment. If we feel we have too much going on, we can always slow down or dose with one of the more supportive remedies like Blue Lotus, Creation or Golden Spiral until we feel ready to continue with the journey that remedies like Liberation, Redemption, Panacea and the Immortalities initiate.



THE ROAD TO ASGARD ~ A 3-DAY COURSE ~

ADVANCED SKILLS DELVING DEEPLY INTO
THE NATURE OF THE MIND.

Fusing secret teachings from the highest Buddhist traditions, the Toltec path and Norse cosmology, liberate yourself from habitual views and conditioned behaviours into true freedom of the mind.

Assisted by alchemical remedies to alter one's self-perception, this course is a powerful journey out of the limited beliefs that subtly condition our behaviours. Cutting through the illusion of binding form, we walk a new path of evolution to our original pure potential.

In this heightened time of evolution, equip yourself with leading edge awareness technology to rise above whatever situation appears binding and limiting. This is a way out, the true way of the warrior, simplified and accessible. By altering your perspective, this transmission is a pathway to liberation in itself - liberation that binds us from suffering.

Facilitated by renowned alchemist Adam Suzman, creator of Liberation, Immortality and the Golden Box and Toltec facilitator, Robyn Wilkinson.

3-days of discovery and teaching. Walk away with an altered view. A completely changed perspective and empowered stance. This course is a transmission introducing you to the Eagles perspective belonging to the seers – those who can see. With that you will literally rule your own world.

COURSE AVAILABLE ONLINE.
Contact robyn@holistica.net for details.

DISCLAIMER:

The remedies of the Golden Box are not designed to treat or diagnose disease, they are there to work with the memories and patterning that give rise to disease in the first place. Please read the FAQs and follow the prescribed dosing. Old memories and feelings may arise in the process of taking these remedies in order to be resolved and this is just a clearing of old emotional debris which is just memory that has been stuck in the body. This process is a good thing as the lighter we become the less density we carry and the more present and joyful we can be at any moment.

FURTHER RESOURCE SITES:

www.liberationtheremedy.com
www.immortalskin.co.za
www.new-immortals.com
www.newimmortals.co.uk
www.beyondmedicines.uae
www.liberationtheremedy.ro

FACEBOOK GROUPS:

New Immortals
Liberation the Remedy

INSTAGRAM: [@newimmortals](https://www.instagram.com/newimmortals)

Copyright © 2022 Immortality
Formulator Adam Suzman

General and specific information and queries: adamsuzman@gmail.com



RESOURCE SITES

www.liberationtheremedy.com | www.immortalskin.co.za
www.new-immortals.com | www.newimmortals.co.uk
www.beyondmedicines.uae | www.liberationtheremedy.ro